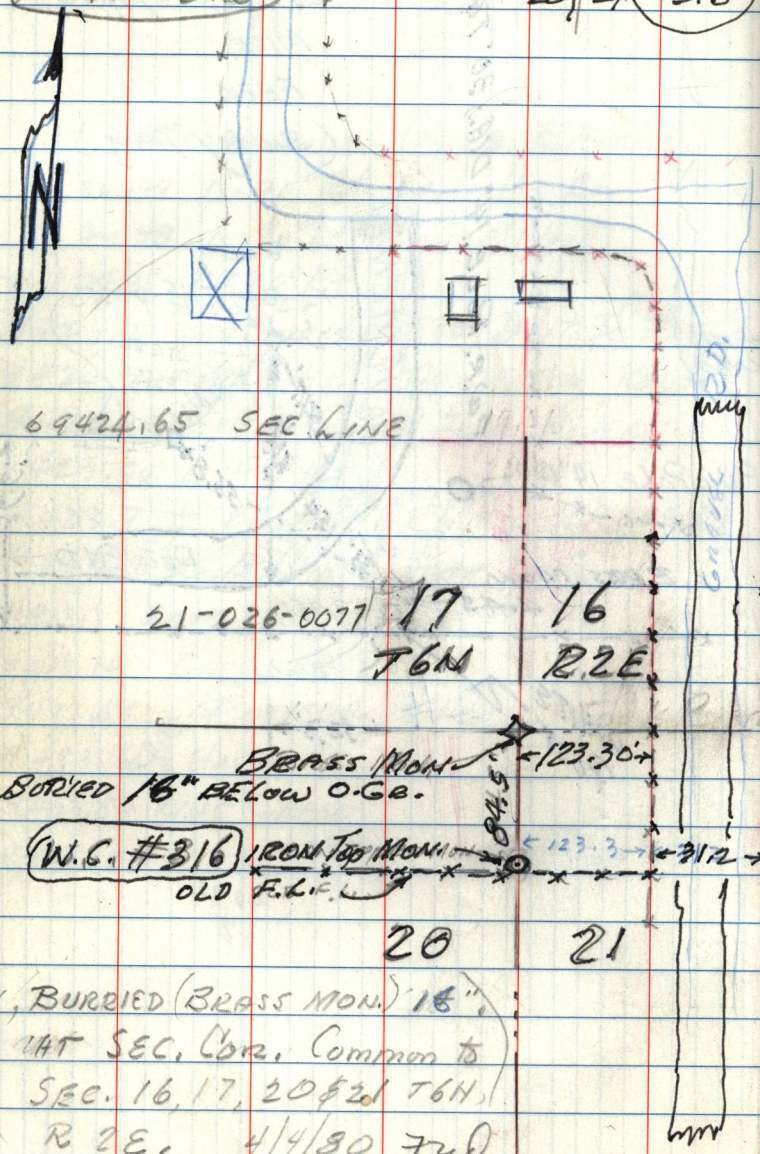


T6N R2E. Cor. REF. 17/16 REF  
 REF #316 20/21 #316



69424.65 SEC. LINE

21-026-0077 17 16

T6N R2E

BRASS MON.  
 BURYED 16" BELOW O.G.B.

(W.C. #316) IRON TOP MON. 123.30  
 OLD F.L.C. 123.3 31.2

20 21

BURYED (BRASS MON.) 16"  
 AT SEC. COR. Common to  
 SEC. 16, 17, 20 & 21 T6N  
 R2E. 4/4/30 Jud  
 (W.C. #316)